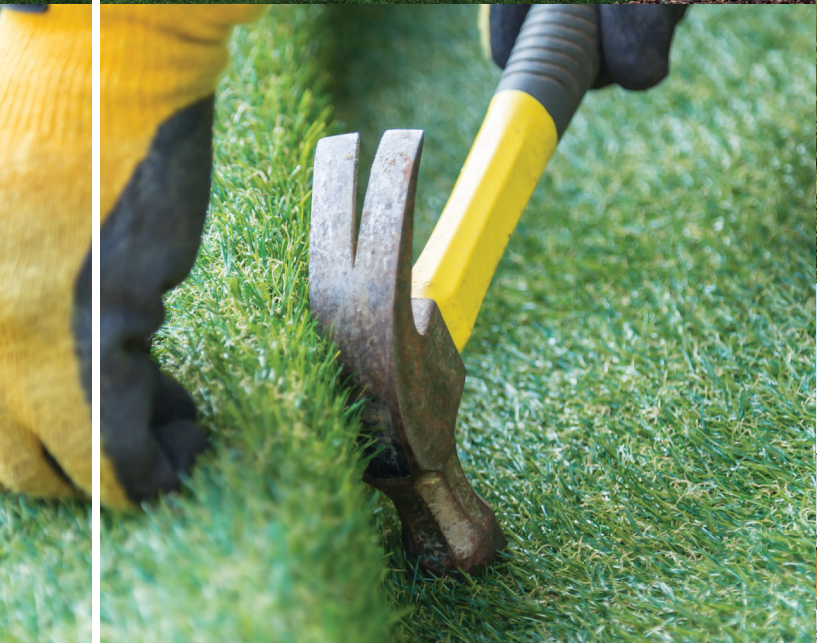




TURF SUPPLIERS

INSTALLATION

A DIVISION OF ALL SURFACE PRODUCTS



DIY TURF BOOKLET

Contents

Chapter 1: Introduction.....	Pg 1 & 2
Chapter 2: Assessing Your Yard.....	Pg 3 & 4
Chapter 3: Planning Your Installation.....	Pg 4, 5 & 6
Chapter 4: Gathering Tools and Materials.....	Pg 7 & 8
Chapter 5: Preparing the Area.....	Pg 8 & 9
Chapter 6: Installing the Base.....	Pg 9 & 10
Chapter 7: Laying the Artificial Grass.....	Pg 10 & 11
Chapter 8: Securing the Edges and Finishing Touches.....	Pg 11 & 12
Chapter 9: Maintenance and Care.....	Pg 12 & 13
Chapter 10: Troubleshooting and FAQs.....	Pg 13 & 14
Chapter 11: Enhancing Your Artificial Turf Installation.....	Pg 15 & 16
Chapter 12: Conclusion and Final Tips.....	Pg 16 & 17

Chapter 1

Introduction

Hello, and welcome to the world of artificial turf! This introductory chapter will provide you with an overview of the installation process, explore the numerous benefits of artificial turf, and discuss important considerations to keep in mind before beginning your journey of transforming your lawn.

The Benefits of Artificial Turf:

Picture having a verdant and vibrant lawn that remains lush throughout the year, without mowing, watering, and fertilizing. This is precisely what synthetic turf provides, and the following are some significant advantages:

Artificial turf is low maintenance and doesn't require the time-consuming tasks of natural grass. You won't have to worry about mowing, watering, or using pesticides. This means you'll have more time to relax and enjoy your yard without the hassle of constant upkeep.

Synthetic turf is highly durable and can withstand heavy foot traffic, making it an ideal choice for high-use areas like play spaces, pet areas, and sports fields. It can endure the wear and tear of daily activities without showing signs of wear and tear.

Water conservation is of utmost importance in today's world. One effective way to reduce water consumption is by installing artificial turf, which doesn't require regular watering like natural grass. This benefits the environment and saves you money on your water bills.

Artificial turf offers a consistently attractive and well-manicured appearance. It remains green and lush all year round, regardless of weather conditions. You no longer have to worry about bare spots or unsightly patches detracting from the appearance of your lawn.

Overview of the Installation Process:

Now that you're aware of the benefits, let's give you a brief overview of the installation process. While it may seem daunting at first, with proper guidance and a little bit of effort, you can achieve a professional-looking result. Here are the general steps involved:

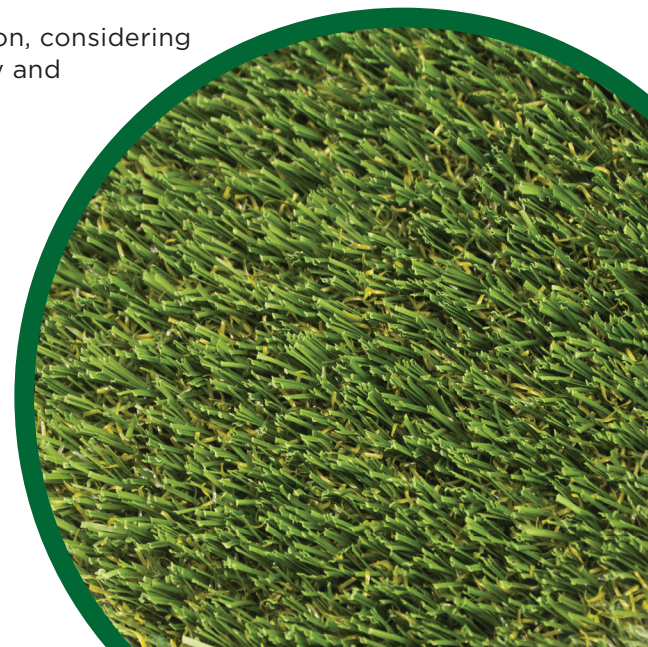
1.2.1 Preparing the Base: Before installing the artificial turf, you'll need to create a suitable base. This typically involves removing existing vegetation, levelling the area, and adding a base material such as decomposed granite or road base.

1.2.2 Gathering Supplies: You'll need certain supplies and tools for the installation, including seam tape, glue, steel nails, a caulking gun, a tape measure, a utility knife, and infill material (such as coated silica sand or rubber).

1.2.3 Planning and Measuring: It's essential to plan out the installation, considering the layout and dimensions of your lawn. Measure the area accurately and determine the best way to cut the turf rolls to minimize waste.

1.2.4 Cutting and Seaming: Once the turf is ready, cut it into manageable sections and carefully seam them together using seam tape and glue. Pay attention to the direction of the grain and follow the recommended cutting and seaming techniques.

1.2.5 Securing and Finishing: After seaming the sections, secure the turf to the ground by nailing down the perimeter. Make final cuts for a precise fit, considering any obstacles like curbs or pavers. Apply infill material to give the turf a natural look and brush it in thoroughly.





1.3 Important Considerations Before Getting Started. Before you dive into the installation process, there are a few important considerations to keep in mind:

1.3.1 Research and Planning: Take the time to research different types of artificial turf, their maintenance requirements, and local regulations. Plan out the project thoroughly, considering factors such as usage, drainage, and aesthetic preferences.

1.3.2 Site Preparation: Ensure that the area where you'll be installing the turf is properly prepared. Clear any debris, level the ground, and address any existing drainage issues. It's essential to address any existing drainage issues before installing artificial turf. Poor drainage can lead to water pooling on the surface, which can affect the performance and longevity of the turf. Consider adding drainage solutions like perforated pipes or gravel to ensure proper water flow.

1.3.3 Climate and Environmental Factors: Take into account the climate and environmental conditions of your area. Some types of artificial turf are better suited for specific climates, so choose a product that can withstand the local weather conditions, such as extreme heat or heavy rainfall.

1.3.4 Quality and Warranty: When selecting artificial turf, opt for high-quality products from reputable manufacturers. Look for warranties that cover the turf against fading, durability issues, and other potential concerns. A reliable warranty ensures that you're investing in a long-lasting and resilient product.

1.3.5 Budget Considerations: Artificial turf offers long-term cost savings compared to natural grass, but it's essential to consider your budget for the initial installation. Factor in the cost of materials, tools, and any professional help you might need. While installing artificial turf yourself can save money, hiring a professional landscaper might be worth it for more complex projects.

1.3.6 Local Regulations and HOA Approval: Check local regulations and homeowner association (HOA) guidelines to ensure that artificial turf installations are allowed in your area. Some neighborhoods or municipalities may have specific rules or restrictions regarding the use of synthetic turf, so it's important to comply with any regulations before proceeding.

By understanding the benefits of artificial turf, getting familiar with the installation process, and considering the important factors mentioned above, you'll be well-prepared to embark on your artificial turf journey. In the following chapters, we will delve deeper into each step of the installation process, providing you with detailed instructions, tips, and best practices to help you achieve a beautiful and functional synthetic lawn.

Remember, installing artificial turf is an exciting project that can transform your outdoor space into a low-maintenance oasis. So, let's get started on creating your dream lawn that stays green and beautiful all year round!

Chapter 2

Assessing Your Yard

Measuring the Installation Area Accurately

Before diving into the exciting world of artificial turf installation, it's essential to assess your yard and determine the exact area where you plan to install the turf. Accurate measurements will ensure that you purchase the right turf and materials, saving you time, effort, and money.

Here's a step-by-step guide to help you measure your installation area accurately:

1. **Gather your tools:** Grab a measuring tape, a notepad, and a pen. These simple tools will be your allies in this measuring adventure.
2. **Define the boundaries:** Start by identifying the boundaries of the area where you want to install the artificial turf. Walk around your yard and visualize the space you envision as your new vibrant lawn.
3. **Measure the length and width:** Begin measuring the length and width of your installation area. Stretch the measuring tape from one end to the other, following the shape of the boundary. Note down the measurements as you go.
4. **Account for irregular shapes:** If your installation area has irregular shapes, break it down into smaller sections. Measure each section individually, noting down the measurements and any distinguishing features.
5. **Calculate the total square footage:** To determine the total square footage of your installation area, multiply the length by the width of each section, and then sum up the individual calculations.
6. **Add extra footage:** It's always a good idea to add a few extra square feet to your total measurements. This additional footage will account for any potential errors during installation and ensure that you have enough turf to cover the entire area.

Evaluating the Existing Landscape and Features

Assessing the existing landscape and features of your yard is crucial to ensure a smooth artificial turf installation process. By evaluating the condition of your yard and identifying any potential obstacles or adjustments needed, you can plan accordingly and achieve optimal results.

Consider the following points during your evaluation:

1. **Observe the terrain:** Take note of any slopes, hills, or uneven areas in your yard. These features may require additional preparation or grading before installing the artificial turf.
2. **Check for obstacles:** Look out for trees, shrubs, or other landscaping elements that may interfere with the installation. Consider whether you want to preserve or remove these features to accommodate the turf.
3. **Inspect the soil:** Evaluate the quality of the soil in your yard. Consider whether it is compacted, fertile, or prone to drainage issues. Addressing soil concerns before installation can contribute to a healthier and long-lasting artificial turf.
4. **Assess irrigation systems:** If you have an existing irrigation system, evaluate its functionality and determine whether any adjustments are necessary. Proper irrigation is crucial for the health and maintenance of your artificial turf.



Understanding Slope and Drainage Considerations

Slope and drainage are important factors to consider when installing artificial turf. Ensuring proper water flow and preventing pooling or flooding will contribute to the longevity and aesthetics of your new lawn.

Here's what you need to know:

1. **Assess the slope:** Determine the degree of slope in your yard. Mild slopes are generally suitable for artificial turf installation, while steeper slopes may require additional measures such as grading or terracing.
2. **Plan for drainage:** Proper drainage is essential to prevent water accumulation on the turf's surface. Evaluate the existing drainage system and make any necessary modifications to ensure efficient water flow away from the installation area.
3. **Consider drainage options:** Depending on your yard's characteristics, you may need to install drainage channels, perforated pipes, or gravel-filled trenches to facilitate proper water drainage. These measures will help maintain the integrity of your artificial turf.



By thoroughly assessing your yard, accurately measuring the installation area, and considering slope and drainage considerations, you'll be well-prepared to move forward with your artificial turf project.

In the next chapter, we'll delve into the exciting process of selecting the right artificial turf for your needs, ensuring you create the perfect landscape that meets your desires and exceeds your expectations.

Chapter 3

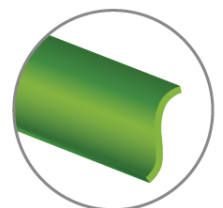
Planning Your Installation

Choosing the Right Type of Artificial Turf for Your Needs

Selecting the correct type of artificial turf is crucial to achieving the desired look, feel, and performance for your lawn. With various options available, it's essential to consider your specific requirements and preferences.

Here are some factors to keep in mind when choosing your artificial turf:

1. **Intended Use:** Determine how you plan to use your lawn. Are you looking for a lush, soft surface for relaxation and play, or do you need a more durable turf for sports and high-traffic areas? Consider the primary purpose of your lawn to guide your turf selection.
2. **Blade Shape:** Artificial turf blades come in different shapes, such as flat, curved, or C-shaped. Each shape offers distinct qualities in terms of aesthetics, resilience, and bounce. Consider the blade shape that aligns with your desired look and performance.
3. **Material Quality:** Assess the quality of the artificial turf materials. Look for turf made from high-quality synthetic fibres that are UV resistant, durable, and designed to withstand different weather conditions. This ensures longevity and maintains the appearance of your lawn over time.
4. **Maintenance Requirements:** Consider the level of maintenance you are willing to commit to. Some turfs require minimal upkeep, while others may need occasional brushing, grooming, or infill replenishment. Choose a turf that fits your desired maintenance routine.



S-shaped



Section 2: The Pile Height, Density, and Color Considerations

Your artificial turf's pile height, density, and colour play significant roles in determining its appearance and performance. Understanding these factors will help you make informed decisions.

Consider the following:

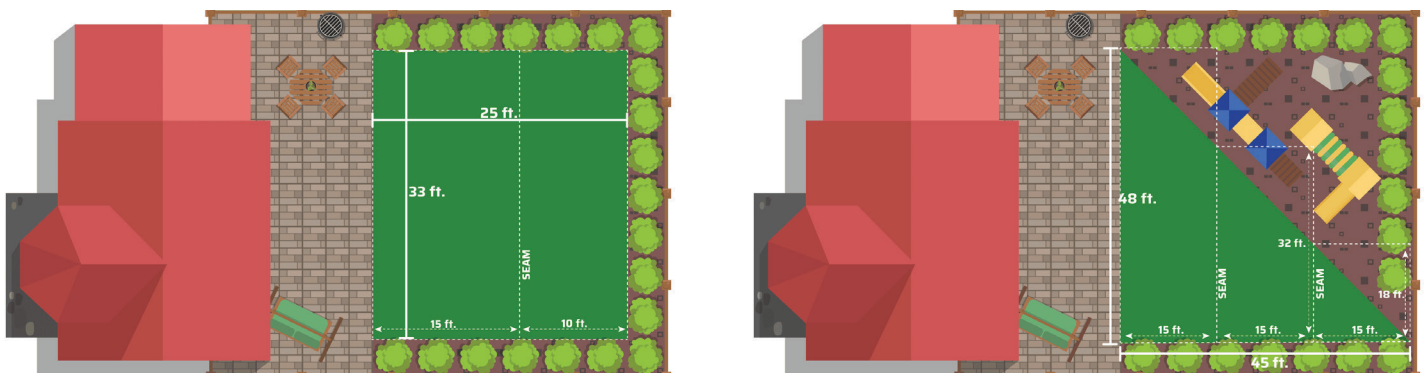
1. **Pile Height:** Pile height refers to the length of the turf blades. Shorter pile heights are ideal for high-traffic areas, while longer pile heights provide a lush, more natural look. Consider your preferences and the intended use of your lawn when selecting the appropriate pile height.
2. **Density:** Density refers to the number of turf blades per square inch. Higher-density turfs tend to look fuller and more luxurious. However, keep in mind that denser turf may require additional maintenance and can retain more heat.
3. **Colour:** Artificial turf is available in various shades of green to mimic the appearance of natural grass. Consider the surrounding landscape, your aesthetic preferences, and how the turf colour complements your home and outdoor space.

Section 3: Creating a Design and Layout Plan for Your Yard

A well-thought-out design and layout plan will ensure the successful installation of your artificial turf, maximizing its visual appeal and functionality.

Here's how to create a plan for your yard:

1. **Measure and Map:** Refer to the accurate measurements you took in Chapter 2 to create a scaled map of your yard. Include existing features, such as trees, flowerbeds, or pathways, and mark areas where you plan to install the artificial turf.
2. **Consider Access Points:** Identify access points, such as gates or pathways, that will impact the transportation and installation of the turf. Plan your layout accordingly to ensure a smooth installation process.
3. **Optimize Turf Usage:** Consider the shape and size of the turf rolls when planning the layout. Minimize waste by positioning turf rolls strategically, optimizing their use, and reducing the number of cuts and seams required.
4. **Create Zones:** Divide your yard into zones based on usages, such as play areas, relaxation spots, or decorative spaces. This will help you determine the turf type, pile height, and other features required for each zone.
5. **Seam Placement:** Plan the placement of seams to ensure they are positioned in less visible areas or where they can be concealed with landscaping elements. Strategically placing seams will contribute to a seamless and natural-looking turf.



Budget:

Here's an example of how to budget for the installation of 500 square feet of artificial turf in a backyard:

1. **Research and Product Selection:** After conducting research, you find a high-quality artificial grass product that costs \$4 per square foot. Multiply this by the total square footage (500 sq ft) to determine the turf cost: $\$4/\text{sq ft} \times 500 \text{ sq ft} = \$2,000$.
2. **Installation Costs:** Now, since you will be doing this by yourself, you won't need to include any installation costs; however, if you'd like to see how much this could cost, take the 500 and multiply it by an additional \$2-\$10 a foot.
3. **Additional Materials and Equipment:** Depending on the project requirements, you estimate that you'll need approximately \$500 worth of additional materials and equipment, such as infill material, edging materials, adhesive or seaming tape, nails or staples, and tools.
4. **Site Preparation and Cleanup:** Suppose your backyard requires minimal site preparation, which you can handle yourself. Therefore, there are no additional costs for site preparation or cleanup. But for larger projects, there could be additional fees to level the ground, remove grass, and so on.
5. **Maintenance and Upkeep:** Allocate a budget for regular maintenance and upkeep. Consider factors such as cleaning solutions, infill replenishment, and potential repairs. Let's assume a yearly maintenance cost of \$200.
6. **Contingency Fund:** Set aside a contingency fund of 10% of the total budget to account for any unforeseen expenses or adjustments. In this case, the contingency fund would be \$2,400 (10% of the total estimated costs).

Now, let's calculate the total budget:

Turf Cost: \$2,000

Installation Cost: \$0

Additional Materials and Equipment: \$500

Maintenance and Upkeep (Yearly): \$200

Contingency Fund: \$270

**Total Budget = Turf Cost + Installation Cost +
Additional Materials and Equipment + Maintenance
and Upkeep + Contingency Fund**

Total Budget = \$2,000 + \$0 + \$500 + \$200 + \$270

Total Budget = \$2970



In this example, the total budget for installing 500 square feet of artificial turf in the backyard is estimated to be \$2970. Remember that these numbers are for illustrative purposes, and actual costs may vary depending on location, specific product choices, and individual project requirements.

By thoroughly considering these factors and creating a comprehensive plan, you'll be well-equipped to choose the right artificial turf for your needs and design a layout that maximizes the beauty and functionality of your yard. In the next chapter, we'll dive into the essential steps of preparing your yard for the installation process, ensuring a solid foundation for your new art.

Chapter 4

Gathering Tools and Materials

Before embarking on your artificial turf installation journey, gathering the necessary tools and materials is essential. The right equipment and supplies will make the process smoother and more efficient. In this chapter, we'll discuss the necessary tools, materials, and tips for sourcing them.

Section 1: Essential Tools Required for the Installation

1. **Utility Knife:** A sharp utility knife is crucial for accurately and clean-cutting the turf. Make sure to have spare blades available for easy replacement.
2. **Tape Measure:** A tape measure helps you take accurate measurements of your yard and turf sections, ensuring precise cuts and a proper fit.
3. **Shovel:** A sturdy shovel is necessary for removing existing grass, debris and preparing the ground for the installation.
4. **Wheelbarrow:** A wheelbarrow comes in handy for transporting materials, such as decomposed granite, infill, or tools, around your yard.
5. **Hammer:** A hammer is needed to secure nails into the perimeter of the turf and any landscape edging, ensuring a secure and well-anchored installation.
6. **Rake:** A rake is useful for levelling the ground, spreading infill, and brushing the turf fibres for a neat and uniform appearance.
7. **Broom or Power Broom:** A broom or power broom helps distribute the infill evenly and enhances the look of the artificial turf by standing the fibres upright.
8. **Spray Bottle:** You'll need a spray bottle to activate the glue when seaming the turf sections together.



Section 2: Understanding the Different Materials Needed and Their Purpose

Alongside the tools, several materials are required for the installation process. Here are the key materials and their purposes:

1. **Artificial Turf:** The main component of your installation, artificial turf comes in various styles, pile heights, and densities. Choose a high-quality turf that suits your needs and preferences.
2. **Decomposed Granite or Road Base:** These materials serve as the base layer for your artificial turf, providing stability, proper drainage, and a level surface.
3. **Seam Kit:** A seam kit includes seam tape and glue, necessary for joining and securing the turf sections together. Ensure the seam kit is designed specifically for artificial turf installations.
4. **Steel Nails:** Steel nails are used to anchor the turf to the base and secure the perimeter. They help keep the turf in place and prevent shifting.
5. **Infill:** Infill materials, such as silica sand or rubber granules, provide support to the turf blades, enhance durability, and improve the overall look and feel of the lawn.



Section 3: Tips for Sourcing Affordable and High-Quality Supplies

When it comes to sourcing tools and materials, consider the following tips:

1. **Research and Compare:** Take the time to research and compare prices, reviews, and quality of different suppliers. Look for reputable sources that offer a wide range of products specifically designed for artificial turf installations.
2. **Seek Professional Advice:** Consult with local experts or professionals who can guide you on the best tools and materials suited for your project. They can provide valuable insights and recommend trusted suppliers.
3. **Bulk Purchasing:** Consider buying materials in bulk, especially infill and base materials. This can often lead to cost savings and ensure you have an adequate supply for your installation.
4. **Check for Discounts and Sales:** Keep an eye out for discounts, promotions, or seasonal sales offered by suppliers. This can help you save money without compromising on the quality of the materials.
5. **Read Customer Reviews:** Before purchasing, read customer reviews and feedback about the products and suppliers. This will give you a better understanding of the quality and reliability of the materials.

By gathering the necessary tools and materials and ensuring their quality, you'll be well-prepared for a successful artificial turf installation.

In the next chapter, we'll guide you through the essential steps of preparing your yard for installation, ensuring a solid foundation for your new artificial turf.

Chapter 5

Preparing the Area

Before you can lay down your new artificial turf, proper preparation of the area is crucial. In this chapter, we'll guide you through the steps to ensure a smooth and level surface for your installation.

Section 1: Clearing the Existing Vegetation and Debris

The first step in preparing the area is to clear away any existing vegetation, such as grass, weeds, or plants, and remove debris. Follow these steps:

1. **Mark the Area:** Use marking spray or stakes and string to outline the specific area where you'll be installing the artificial turf.
2. **Remove Vegetation:** Use a shovel, spade, or a turf cutter to cut and remove the existing grass or vegetation. Dig deep enough to remove the roots and ensure a clean slate.
3. **Clear Debris:** Rake and remove any rocks, stones, branches, or other debris from the area. It's important to have a clean and smooth surface for the installation.



Section 2: Levelling the Ground and Addressing Unevenness

Achieving a level surface is essential for the proper installation of artificial turf. Follow these steps to level the ground:

1. **Inspect the Area:** Walk around the installation area and identify any areas that are uneven or have noticeable bumps or depressions.

2. **Fill Depressions:** If you come across low spots or depressions, fill them with a suitable material like decomposed granite or road base. Compact the material using a hand tamper or plate compactor to create a stable base.
3. **Level High Spots:** For high spots, remove excess soil or material to bring them to the desired level. Use a shovel or rake to distribute the soil evenly.
4. **Use a Levelling Tool:** A long, straight board or a levelling tool can be used to check the evenness of the ground. Place it on different areas of the installation site and adjust the soil as needed until you achieve a consistent level.

Section 3: Excavation and Adjusting the Base as Necessary

Proper excavation and adjustment of the base will ensure optimal drainage and stability for your artificial turf. Follow these steps:

1. **Determine Base Depth:** The depth of the base material will depend on factors such as your region's climate, soil type, and intended use of the turf. Generally, a base depth of 2 to 3 inches is recommended.
2. **Excavate the Area:** Use a shovel or a sod cutter to excavate the area to the desired depth, removing the existing soil or turf. Keep the edges of the excavation clean and straight for a neat installation.
3. **Add Base Material:** Fill the excavated area with decomposed granite or a quarter-inch minus road base. Spread it evenly and use a rake to level the material. Compact it with a plate compactor to create a stable and well-draining base.
4. **Check for Proper Slope:** Ensure that the base slopes away from any structures or buildings to allow proper water drainage. Aim for a minimum slope of 1 inch for every 5 feet of distance.
5. **Adjust the Base:** If needed, make adjustments to the base by adding or removing material to achieve the desired slope and levelness. Continue to check with a level or straight board for accuracy.

By following these steps, you'll have a well-prepared area that sets the foundation for a successful artificial turf installation. In the next chapter, we'll guide you through the process of laying and securing the turf, bringing you closer to your dream of a lush and low-maintenance lawn.

Chapter 6

Installing the Base

In Chapter 5, we prepared the area for your artificial turf installation. Now, in Chapter 6, we'll guide you through installing the base, a crucial step to ensure the stability and longevity of your turf.

Section 1: Using Weed Barrier Fabric and Its Importance

Weed barrier fabric, also known as geotextile fabric, is a key component in the installation process. It helps prevent weeds from growing through the turf and provides an additional layer of protection. Follow these steps to use weed barrier fabric effectively:

1. **Roll Out the Fabric:** Start by rolling out the weed barrier fabric over the prepared area. Ensure that it covers the entire installation site, overlapping the edges by a few inches.
2. **Trim Excess Fabric:** Use a utility knife or scissors to trim any excess fabric along the edges. It's important to have a clean and precise fit.
3. **Secure the Fabric:** Secure the weed barrier fabric in place by using landscape staples or nails. Space them out approximately every 12 inches along the edges and at regular intervals across the installation site.

Section 2: Spreading and Compacting the Base Material

The base material provides a stable foundation for your artificial turf. Follow these steps to spread and compact the base material effectively:

1. **Spread the Base Material:** Begin by evenly distributing the base material (decomposed granite or road base) over the weed barrier fabric. Use a shovel or rake to spread it out, ensuring a consistent thickness of 2 to 3 inches.
2. **Level and Compact:** Use a rake to level the base material, smoothing out any uneven areas. Once levelled, use a plate compactor to compact the base material. Move the compactor in overlapping passes to achieve proper compaction. Ensure that the base is compacted uniformly and solidly.
3. **Check for Evenness:** Periodically check the evenness of the base using a level or straight board. Make adjustments as necessary, adding or removing base material to achieve a smooth and level surface.

Section 3: Ensuring Proper Drainage and Stability

Proper drainage is essential for maintaining the longevity and appearance of your artificial turf. Follow these steps to ensure proper drainage and stability:

1. **Create Drainage Openings:** If your installation area requires additional drainage, create small drainage openings or perforations in the base material using a garden fork or a similar tool. These openings will allow water to flow through the base and prevent waterlogging.
2. **Evaluate Stability:** Walk over the compacted base to ensure it feels firm and stable. If you notice any soft or unstable areas, add more base material and compact it again until the entire base is solid.
3. **Check for Proper Slope:** Verify that the base has the desired slope for optimal water drainage. Use a level or straight board to confirm that the slope is consistent throughout the installation area.



By following these steps to install the base, you'll have a sturdy and well-drained foundation for your artificial turf. In the next chapter, we'll guide you through the exciting process of laying and securing your artificial turf, bringing you closer to enjoying a beautiful and low-maintenance lawn.

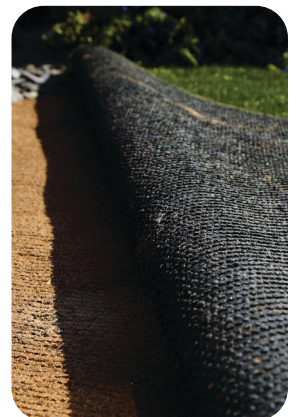
Chapter 7

Laying the Artificial Grass

In Chapter 6, we prepared the base for your artificial turf installation. Now, in Chapter 7, we'll guide you through laying the artificial grass, bringing your vision of a beautiful and low-maintenance lawn one step closer to reality.

Section 1: Unrolling and Acclimating the Turf

1. **Unroll the Turf:** Start by unrolling the artificial grass across the prepared base. Be mindful of the direction of the grass blades and ensure that they are facing the desired orientation.
2. **Allow Acclimation:** Give the turf some time to acclimate to the environment. This is especially important if the turf has been tightly rolled or packaged. Ideally, leave it exposed to sunlight and air for a few hours to allow it to relax and flatten out.



Section 2: Trimming and Shaping the Turf for a Perfect Fit

1. **Measure and Mark:** Use a tape measure to determine the areas where the turf needs to be trimmed for a precise fit. Mark these areas using chalk or another temporary marking tool.
2. **Cut Carefully:** Using a sharp utility knife or carpet cutter, carefully cut along the marked lines to trim the turf. Take your time to ensure clean and accurate cuts. It's better to make multiple shallow passes rather than trying to cut through the turf in one go.
3. **Shape the Edges:** If your installation area has curved edges or irregular shapes, create small relief cuts along the edges of the turf to allow it to conform to the desired shape. This will help achieve a natural and seamless look.
4. **Join Multiple Pieces:** If you're installing multiple pieces of turf, carefully align the edges and use seam tape and adhesive to create a strong and invisible bond. Follow the manufacturer's instructions for proper seaming techniques.
5. **Secure the Edges:** Once the turf is trimmed and shaped to fit your installation area, secure the edges using landscape staples or nails. Place them approximately every 6-8 inches along the perimeter to hold the turf in place.



Remember, precision and attention to detail are key when trimming and shaping the turf. Take your time to ensure a perfect fit and smooth transitions between sections. By following these steps to lay the artificial grass, you're one step closer to enjoying a lush and hassle-free lawn.

In the next chapter, we'll cover the important step of infilling the turf, which not only enhances its appearance but also provides added stability and durability.

Chapter 8

Securing the Edges and Finishing Touches

In Chapter 7, we laid the artificial grass, bringing us closer to achieving a beautiful and low-maintenance lawn. In Chapter 8, we will focus on securing the edges and adding the finishing touches to ensure a polished and long-lasting installation.

Section 1: Properly Securing the Edges with Ground Stakes

1. **Assess the Edges:** Start by inspecting the perimeter of the turf installation. Ensure that the edges are aligned and in their desired position.
2. **Install Ground Stakes:** Along the edges, place ground stakes or landscape nails approximately every 6-8 inches. Insert them at a slight angle, driving them into the ground securely. This will help prevent any shifting or movement of the turf.
3. **Secure with Nails:** For additional stability, use galvanized nails to secure the turf along the perimeter. Place the nails close to the edge, ensuring they penetrate through the turf and into the base material below.



Section 2: Creating Neat and Clean Edges

1. **Trim Excess Material:** Using a sharp utility knife or carpet cutter, carefully trim any excess turf along the edges to create clean lines. Take your time to achieve precise cuts and maintain a professional-looking finish.
2. **Use Landscape Edging:** Consider using landscape edging, such as plastic or metal borders, to create defined edges and prevent the turf from spreading beyond its designated area. Install the edging along the perimeter and secure it in place according to the manufacturer's instructions.



Section 3: Adding Infill Material for Enhanced Stability and Appearance

1. **Choose the Right Infill:** Select the appropriate infill material based on your preferences and the intended use of the artificial grass. Common options include silica sand, rubber granules, or a combination of both. Follow the manufacturer's recommendations for the recommended infill type and application rate.
2. **Apply the Infill:** Using a drop spreader or by hand, evenly distribute the infill material across the surface of the turf. Take care not to overfill, as it may affect the appearance and functionality of the turf. Use a brush or rake to work the infill material into the fibres, ensuring it reaches the base for stability.
3. **Brush and Fluff the Grass:** After applying the infill, use a power broom or a stiff-bristled brush to brush the turf in multiple directions. This helps distribute the infill evenly, encourages the grass blades to stand upright, and creates a natural-looking appearance.



By securing the edges with ground stakes, creating clean edges, and adding the appropriate infill material, you'll enhance your artificial grass installation's stability, durability, and aesthetic appeal.

In the next chapter, we'll discuss essential maintenance practices to keep your synthetic turf looking its best for years to come.

Chapter 9

Maintenance and Care

Congratulations on your newly installed artificial turf! In this chapter, we'll delve into the essential maintenance and care practices to ensure your synthetic lawn's longevity and optimal appearance.

Section 1: Understanding the Maintenance Requirements of Artificial Turf

1. **Read the Manufacturer's Guidelines:** Familiarize yourself with the specific maintenance instructions provided by the manufacturer of your artificial turf. These guidelines may include recommendations for cleaning products, frequency of maintenance, and other important considerations.
2. **Regular Inspection:** Conduct regular inspections of your artificial turf to identify any issues or areas that require attention. Look for signs of wear, damage, or drainage problems.



Section 2: Tips for Cleaning, Brushing, and Removing Debris

1. **Removing Debris:** Regularly remove leaves, twigs, and other debris from the surface of your turf using a leaf blower, a soft-bristle brush, or a plastic rake. This prevents organic matter from accumulating and potentially causing damage or inhibiting proper drainage.
2. **Spot Cleaning:** Promptly address any spills or stains on the turf by blotting the affected area with a clean cloth or towel. For stubborn stains, use a mild detergent diluted with water and gently scrub the area. Rinse thoroughly with water and allow it to dry.
3. **Brushing:** Periodically brush your artificial turf to maintain its appearance and integrity. Use a stiff-bristle brush or a power broom to brush against the grain of the turf. This helps to redistribute infill material, lift the blades, and prevent matting.

Section 3: Seasonal Care and Considerations

1. **Weed Control:** Although artificial turf greatly reduces the likelihood of weed growth, occasional weeds may still emerge. Promptly remove any weeds that appear by hand or with a weed removal tool.
2. **Snow and Ice Removal:** If you experience snowy or icy conditions, avoid using metal shovels or sharp tools to remove snow. Instead, use a plastic shovel or a broom with soft bristles to gently clear the surface. Avoid applying salt or de-icing chemicals, as they can potentially damage the turf.
3. **UV Protection:** Artificial turf is designed to withstand UV exposure, but over time, the sun's rays can cause some fading or discoloration. If your lawn receives intense sunlight, consider using a UV protectant spray recommended by the manufacturer to help minimize any potential effects.
4. **Regular Fluffing:** Periodically fluff the turf with a power broom or a stiff-bristle brush to maintain its natural appearance and prevent flattening or matting. This is especially important in high-traffic areas.



By following these maintenance practices and caring for your artificial turf with diligence, you'll ensure that it continues to look vibrant and lush for many years to come. In the final chapter, we'll summarize the key points covered in this ebook and provide some additional tips and resources for a successful artificial turf installation.

Chapter 10

Troubleshooting and FAQs

In this final chapter, we'll address common challenges that may arise during installing and maintaining your artificial turf.

We'll also answer some frequently asked questions to provide you with additional guidance and support.

Section 1: Common Installation Challenges and How to Overcome Them

1. **Drainage Issues:** If you notice water pooling or inadequate drainage on your artificial turf, it may be due to an insufficient base or improper slope. Address this by ensuring proper excavation and base preparation during the installation process. If the issue persists, consult with a professional installer or landscaper for further assistance.

2. **Seaming Challenges:** Occasionally, seams may become visible or show signs of separation. To address this, check if the turf edges are properly aligned and ensure that the seam tape and adhesive are applied according to the manufacturer's instructions. Use additional adhesive if needed and apply pressure to secure the seams.
3. **Shifting or Movement:** If you notice your turf shifting or moving, it may be due to inadequate base compaction or insufficient anchoring. Consider recompacting the base material and using enough ground stakes or nails around the perimeter to secure the edges. If the issue persists, consult with a professional installer for guidance.

Section 2: Addressing Potential Issues with Drainage, Seams, or Shifting

1. **Drainage:** Proper drainage is essential for the longevity and performance of your artificial turf. Ensure that the base has an adequate slope and use permeable materials to promote water drainage. Regularly inspect and clear any debris or obstructions that may hinder drainage.
2. **Seams:** Secure and maintain your turf seams by following the manufacturer's instructions for seam tape and adhesive application. Apply additional adhesive if necessary and use a weighted roller or apply pressure to ensure a strong bond. Regularly inspect the seams and address any issues promptly to prevent further separation.
3. **Shifting:** To minimize shifting or movement of your artificial turf, ensure that the base is properly compacted and use enough ground stakes or nails to secure the edges. Regularly inspect and reposition any loose sections to maintain a consistent and stable surface.

Section 3: Frequently Asked Questions from Homeowners

1. **Q1: How long does artificial turf typically last?**
A: Artificial turf's lifespan varies depending on usage, maintenance, and quality. Generally, high-quality turf can last 15-20 years or more with proper care.
2. **Q2: Can I install artificial turf over an existing lawn?**
A: Installing artificial turf directly over an existing lawn is not recommended. Proper preparation, including clearing and levelling the area, is essential for a successful installation.
3. **Q3: Can I install artificial turf myself, or do I need professional help?**
A: While it is possible to install artificial turf yourself, professional assistance is recommended for complex installations or if you lack experience. Professional installers have the expertise and tools to ensure a seamless and durable installation.
4. **Q4: Can I use artificial turf for pets?**
A: Yes, artificial turf is pet-friendly. Choose a turf designed specifically for pet use, and regularly clean and rinse the turf to maintain hygiene. Avoid using harsh chemicals that may be harmful to pets.
5. **Q5: How do I clean artificial turf?**
A: Regularly remove debris and rinse the turf with water to keep it clean. For more stubborn stains, use a mild detergent diluted with water and gently scrub the affected area. Avoid using harsh chemicals or power washers.



By being aware of these troubleshooting tips and addressing any potential issues promptly, you can maintain a beautiful and functional artificial turf for years to come. In conclusion, we've covered the key steps and considerations for installing and caring for artificial turf in this ebook. We hope this guide has provided you with the knowledge and confidence to embark on this DIY project.

Chapter 11

Enhancing Your Artificial Turf Installation

In this chapter, we'll explore creative ideas to enhance your artificial turf installation and make it more appealing and functional. You can transform your yard into a truly remarkable space by integrating the turf with landscaping features, adding walkways or play areas, and considering additional accessories or upgrades.

Section 1: Integrating the Turf with Landscaping Features

1. **Garden Beds and Planters:** Enhance the visual appeal of your artificial turf by incorporating garden beds and planters. Add colourful flowers, shrubs, or ornamental grasses to create a vibrant and natural-looking landscape. Be sure to choose plants that thrive in your climate and require minimal maintenance.
2. **Potted Plants and Containers:** Place potted plants or containers strategically throughout your turf area to add greenery and variety. Choose plants of different heights, textures, and colours to create visual interest. You can also use containers to define specific areas or create focal points.
3. **Trees and Shrubs:** Consider planting trees or shrubs around the perimeter of your artificial turf to provide shade, privacy, and a sense of enclosure. Opt for low-maintenance varieties that won't drop excessive leaves or create too much shade that may affect the turf's appearance.



Section 2: Adding Walkways, Pathways, or Play Areas

1. **Paver or Stone Pathways:** Create elegant and functional pathways within your turf area using pavers, stepping stones, or natural stone tiles. This adds visual interest and provides a clear walkway and helps prevent wear and tear on the turf.
2. **Playground or Play Area:** If you have children or want to create a dedicated play space, consider incorporating a play area into your artificial turf installation. Install a soft and cushioned play surface with rubber mats or foam padding, ensuring a safe and enjoyable space for kids to play.
3. **Putting Green or Sports Area:** Take advantage of the versatility of artificial turf by dedicating a section for a putting green or a sports area. Install artificial turf specifically designed for these purposes to create a smooth and consistent playing surface.

Section 3: Exploring Additional Accessories or Upgrades

1. **Outdoor Furniture and Seating:** Create a comfortable and inviting outdoor living space by adding outdoor furniture, such as lounge chairs, benches, or a dining set. This allows you to relax, entertain guests, and enjoy your artificial turf area to the fullest.
2. **Lighting Features:** Illuminate your turf area and extend its usability into the evening by incorporating outdoor lighting. Use pathway lights, string lights, or spotlights to create ambiance and enhance the overall atmosphere of your yard.
3. **Water Features:** Consider adding a water feature, such as a fountain, pond, or small waterfall, to introduce a calming and soothing element to your artificial turf installation. The sound of running water can create a tranquil environment and add visual interest.



Remember, the key is to find elements that complement your artificial turf and match your personal style and preferences. By incorporating these ideas, you can create a unique and inviting outdoor space that goes beyond just a simple lawn.

Congratulations! You have reached the end of this ebook, which has provided you with a comprehensive guide to artificial turf installation and maintenance. We hope this information has been valuable and inspiring as you embark on your journey to transform your yard. Enjoy your beautiful and hassle-free artificial turf for years to come!

Chapter 12

Conclusion and Final Tips

Congratulations on completing this ebook on artificial turf installation!

Throughout the previous chapters, we have covered a range of topics to guide you through transforming your yard into a beautiful and low-maintenance space.

As we conclude, let's recap the key steps and considerations, emphasize the long-term benefits of artificial turf, and encourage you to enjoy your transformed yard to the fullest.

Recap of the Key Steps and Considerations:

1. **Introduction:** We explored the benefits of artificial turf, the installation process, and important considerations before getting started.
2. **Assessing Your Yard:** We discussed how to accurately measure the installation area, evaluate the existing landscape and features, and consider slope and drainage factors.
3. **Planning Your Installation:** We covered choosing the right type of artificial turf for your needs, considering pile height, density, and colour, and creating a design and layout plan for your yard.
4. **Gathering Tools and Materials:** We provided an overview of essential tools required for the installation and offered tips for sourcing affordable and high-quality supplies.
5. **Preparing the Area:** We discussed clearing existing vegetation and debris, levelling the ground, and addressing any unevenness in preparation for the installation.
6. **Installing the Base:** We covered the importance of using weed barrier fabric, spreading and compacting the base material, and ensuring proper drainage and stability.
7. **Laying the Artificial Grass:** We explored the steps involved in unrolling, acclimating, trimming, and shaping the turf for a perfect fit.
8. **Securing the Edges and Finishing Touches:** We guided properly in securing the edges with ground stakes, creating neat and clean edges, and adding infill material for enhanced stability and appearance.
9. **Maintenance and Care:** We discussed the maintenance requirements of artificial turf, tips for cleaning, brushing, and removing debris, and seasonal care considerations.
10. **Troubleshooting and FAQs:** We addressed common installation challenges, provided solutions, and answered frequently asked questions from homeowners.
11. **Enhancing Your Artificial Turf Installation:** We explored creative ideas for integrating the turf with landscaping features, adding walkways or play areas, and considering additional accessories or upgrades.

Emphasizing the Long-Term Benefits of Artificial Turf:

Artificial turf offers numerous benefits that can enhance your lifestyle and improve the appearance of your yard. By choosing artificial turf, you have freed yourself from the constant mowing, watering, and frustration of dealing with dead patches of natural grass.

With minimal maintenance, you can enjoy a lush and vibrant lawn all year round. Artificial turf is durable, UV-resistant, and designed to withstand heavy foot traffic, making it an excellent long-term investment for your home.

Encouraging Homeowners to Enjoy Their Transformed Yard:

Now that you have completed the installation process, it's time to step back and appreciate the transformation you have achieved. Take a moment to admire your beautiful, green lawn and envision the possibilities it offers for outdoor activities, relaxation, and entertainment. Invite friends and family over for gatherings, enjoy picnics on the turf, or simply spend quiet moments appreciating the beauty of your newly transformed yard.

Remember to follow the maintenance and care tips provided earlier to keep your artificial turf looking its best. Regularly brush the fibres, remove debris, and address any minor issues promptly to ensure the longevity and optimal appearance of your turf.

Thank you for taking the time to read this ebook and for investing in artificial turf for your home. We hope this guide has been informative and helpful in your journey toward a hassle-free and visually appealing lawn. Enjoy your beautiful artificial turf and all the benefits it brings!

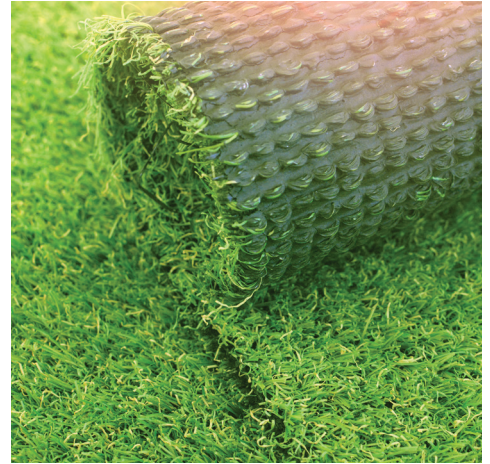




TURF SUPPLIERS

INSTALLATION

A DIVISION OF ALL SURFACE PRODUCTS



Kid & Pet-Friendly



Chemical Free



Eco-Friendly



No Muddy Paws



All Season Use



turfsupplierscanada.com

778.323.0000 | sales@turfsupplierscanada.com